

# Nine Elms Lane Riverside Court, SW8





A bright and exceptionally spacious three-bedroom, two receptions apartment located on the fourth floor of a well regarded modern riverside development. Set along the banks of the River Thames and within close proximity to the new US Embassy, this property also enjoys excellent access to Vauxhall's transport links.

The apartment features a generous dual-aspect reception room, a fully integrated separate kitchen with a dedicated utility room and a private balcony offering serene views. Accommodation includes four well-proportioned bedrooms, three modern bathrooms (including one ensuite) and abundant built-in storage throughout.

Additional benefits include two secure underground parking spaces and a residents' porter. Situated within the dynamic Nine Elms regeneration area, this is a rare opportunity to acquire a superb home in one of London's most exciting and evolving riverside locations.

1904.00 sq ft | 2 RECEPTION ROOM | 3 BEDROOMS | EN SUITE SHOWER ROOM | 3 BATHROOMS | KITCHEN



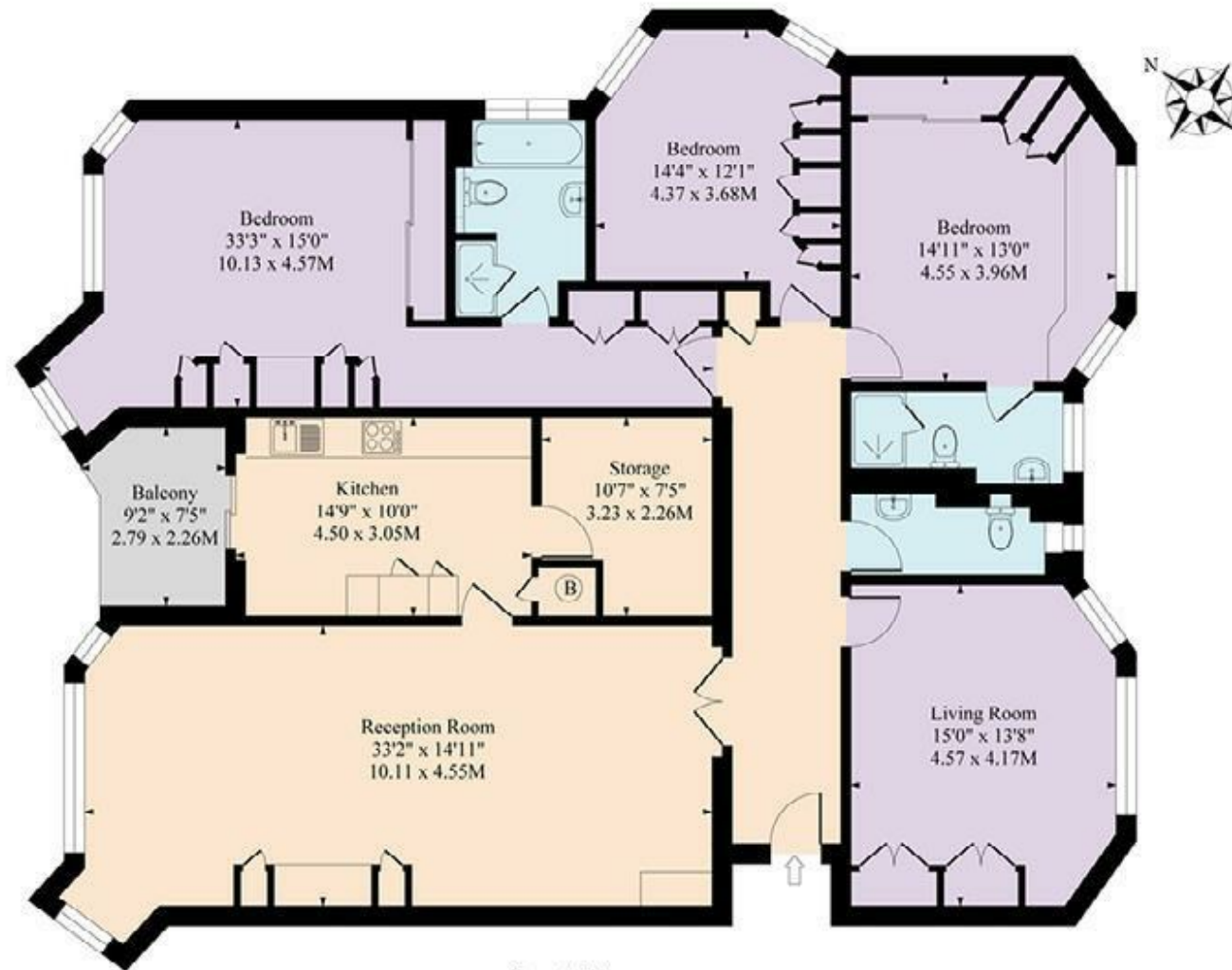
**Guide Price £1,500 Per  
Week**

020 7937 9070  
[www.croft-international.com](http://www.croft-international.com)





# Riverside Court SW8



## Fourth Floor

Approximate Gross Internal Area 1904 Sq Ft - 176.89 Sq M

Measured in according with RICS guidelines. Every attempt is made to ensure accuracy

However all measurements are approximate.

The floor plan is illustrative purposes only and is not to scale



